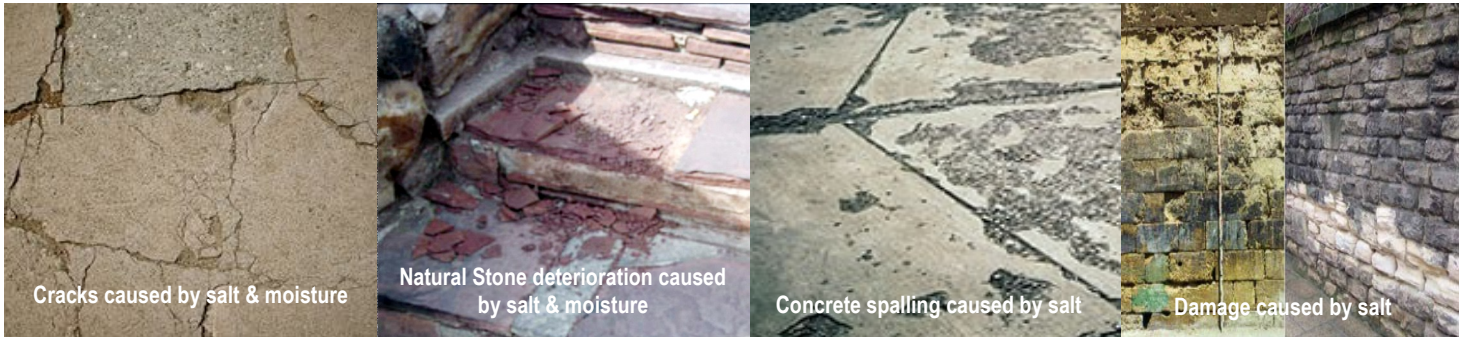


Concrete, Masonry & Hardscape Winterization

Winters can be harsh on concrete and masonry surfaces. After all the snow melts, you are left with the unsightly deterioration of your hardscapes.

Concrete and masonry surfaces do not stand a chance against: 1) Freeze/Thaw Cycles, 2) Ice Melting Chemicals and 3) Salts and Brines

Now Poul's Landscaping & Nursery Inc. can help you protect your concrete and masonry surfaces by winterizing them prior to the onset of winter.



You can't control the weather, but you can prevent the damage

Winterize Various Surfaces

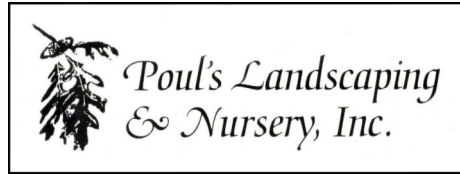
- Driveways & Sidewalks • Porches & Patios • Stamped Concrete
- Garage Floors • Concrete & Clay Pavers • Masonry Walls • Natural Stone Surfaces

The Poul's Advantage

- Professional Application
- Reputable Company since 1966
- Winterization sealer penetrates to produce long-lasting protection
 - Surfaces keep their natural appearance
- Surfaces keep their natural "breathing" characteristics and does not trap moisture

Request a quote:

Rex Delson phone: (847) 949-6667 xt. 103 email: rex@pouls.com



Concrete, Masonry & Hardscape Winterization

Standard Winterization Package

This is an excellent service for newly installed concrete and hardscapes that require minimal cleaning prior to being winterized. Our Standard Winterization Package includes:

- Power washing of all surfaces being winterized. This will help ensure excessive dirt is not being sealed in and will allow our winterization sealer to properly absorb into the concrete or masonry surface.
- Professional application of a winterization sealer that provides long-lasting protection against moisture intrusion and water-related staining or deterioration.

Premier Winterization Package

This is recommended for surfaces that require more cleaning prior to being winterized. In addition to the above Standard Winterization services, our Premier Winterization Package also includes:

- The removal of oil & grease stains, mud & rust stains, efflorescence, atmospheric dirt & mildew and unwanted vegetation & weeds.
- Re-application of jointing sands that may have been removed during the cleaning process.

Note: Not suitable for surfaces previously treated with water repellents or liquid hardeners. Not suitable for surfaces subject to constant water spray (car washes). Will not prevent water or salt penetration through structural cracks, defects or open joints. Not recommended for below grade applications. Re-application of winterization sealer is suggested every 5-7 years or when water and salt repellency diminishes.

Request a quote:

Rex Delson phone: (847) 949-6667 xt. 103 email: rex@pouls.com